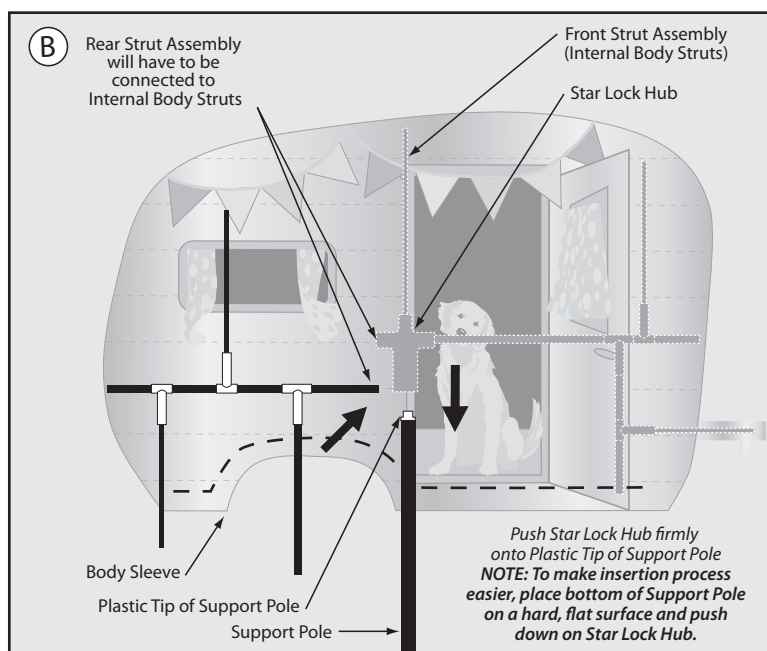
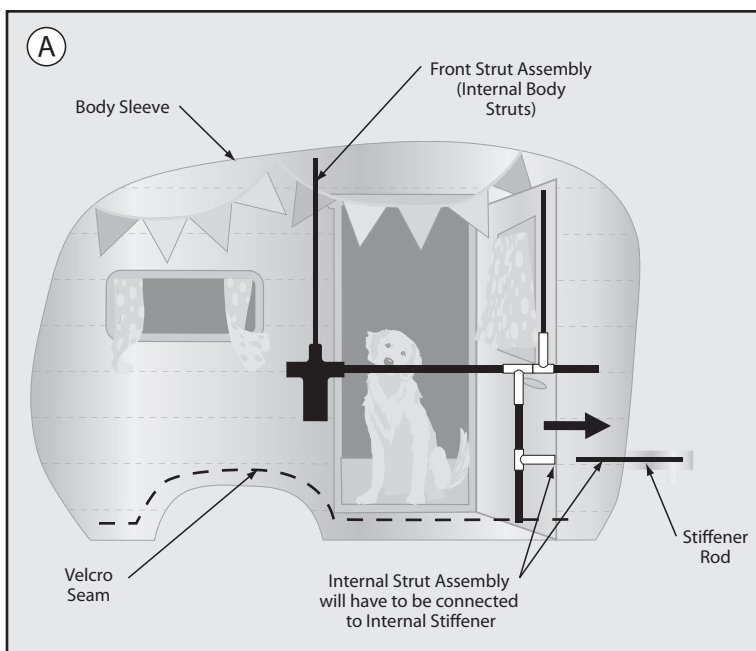
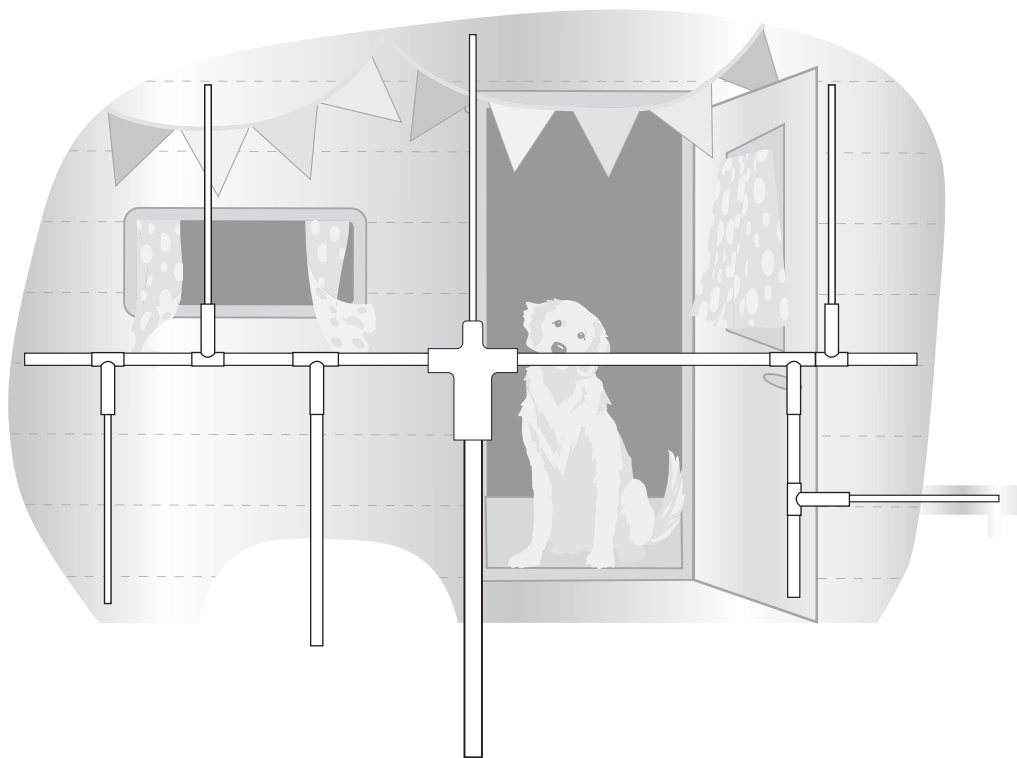


# Vintage RV Spinner *assembly instructions*

sku #26827

Completed Internal Strut Assembly.  
Make sure all parts connect as shown.

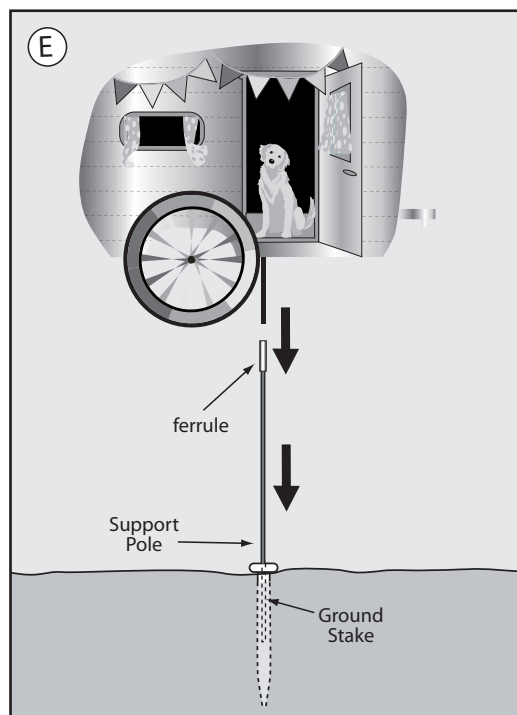
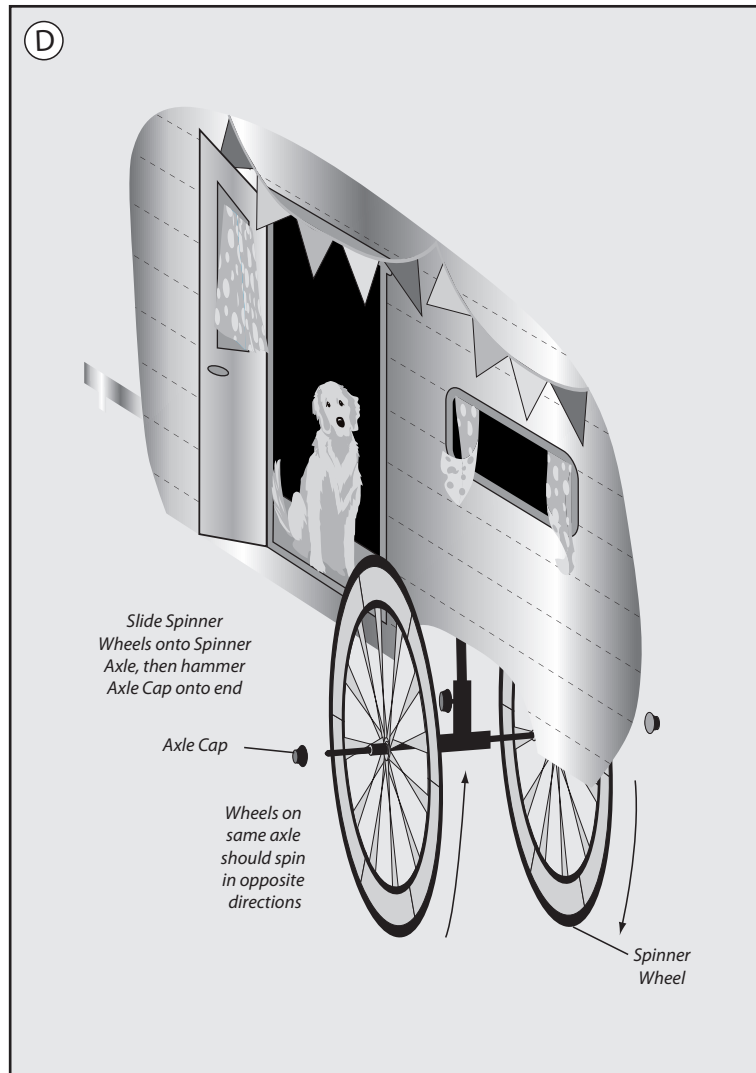
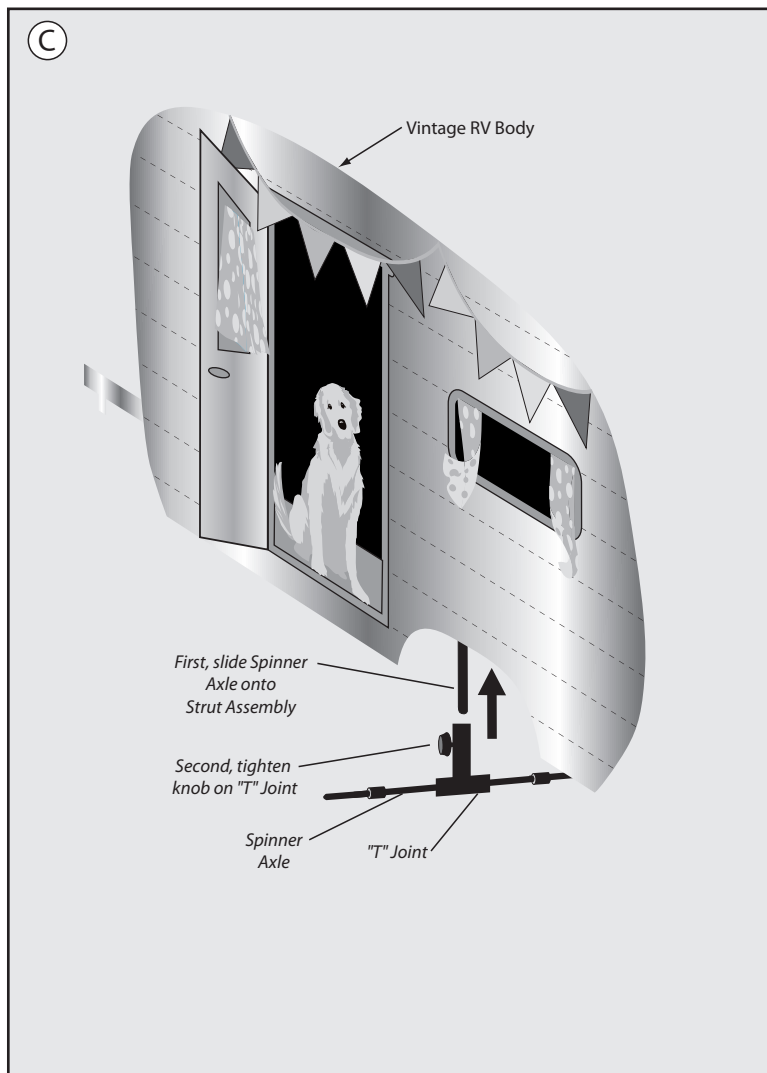


## Step 1

The Strut Assembly of your Vintage RV spinner is shipped in two sections. The Front Strut Assembly comes already inserted into the RV Body Sleeve. There is also a Stiffener Rod within the Sleeve. Open the Velcro seam on the RV Body Sleeve and connect the Front Strut Assembly to the Stiffener Rod. (diagram A)

## Step 2

Insert the Rear Strut Assembly into the Body Sleeve and connect to the Front Strut Assembly. (Diagram B)



### Step 3

Slide the narrow, plastic tipped end of the Support Pole into Star Lock Hub. Push down on the hub until The Support Pole locks into place and cannot be removed. Close Velcro Seam. (Diagram B)

### Step 4

Slide the Spinner Axles onto the Wheel Strut Assemblies. Tighten knobs on the "T" Joints to hold the Axles to the Struts. (Diagram C)

### Step 5

Take one of the two Spinner Wheels and slide it onto one the Spinner Axle. Slide second Spinner Wheel onto Spinner Axle. **(Note: Spinner Wheels on same axle should spin in opposite directions. Before putting second Axle Cap into place, make sure wheels spin as shown in diagrams C and D.)** Pound Axle Caps onto uncapped ends of Spinner Axle using a mallet or piece of wood. (Diagram D)

### Step 6

Drive Ground Stake into ground. Slide assembled Vintage RV Spinner into Ground Stake. (Diagram E)

**PLEASE NOTE:** Although your Vintage RV Spinner is constructed with UV resistant SunTex™ fabric, it is recommended that you take it inside during storms and harsh weather to preserve its durability.