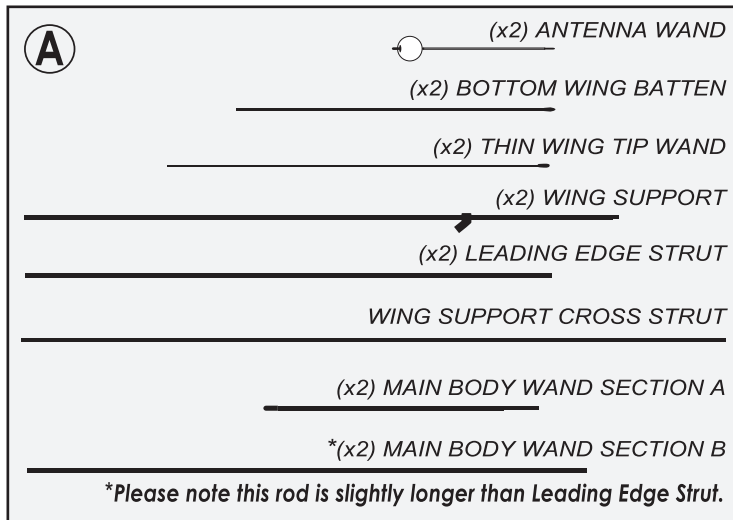


# Monarch Butterfly

assembly instructions



open your new kite:

1. Unwrap kite and spread out wings of kite with Spine (pre-inserted by factory) facing up. There are 5 vinyl tube fittings, numbered in Diagram B, along the Spine.

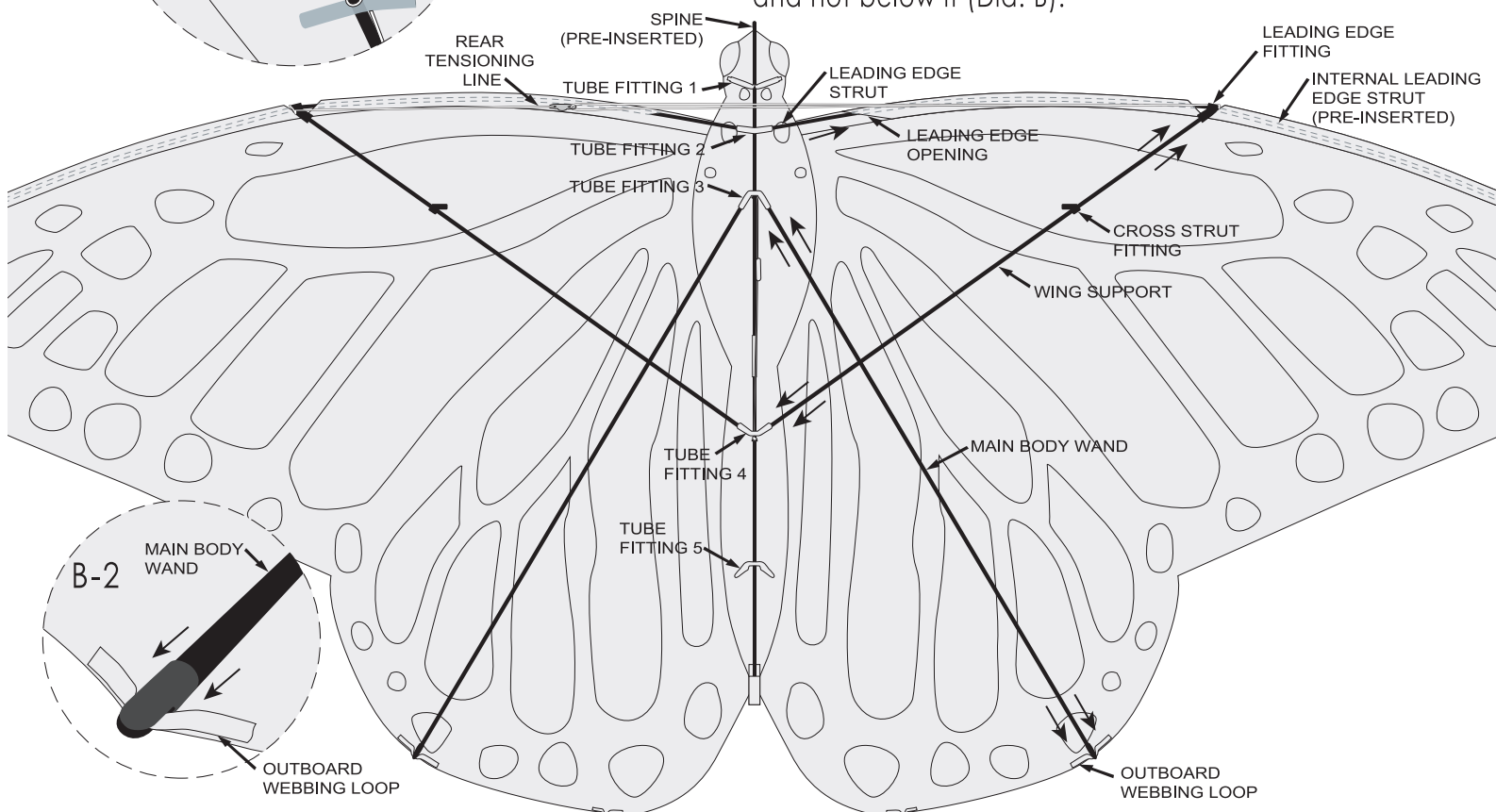
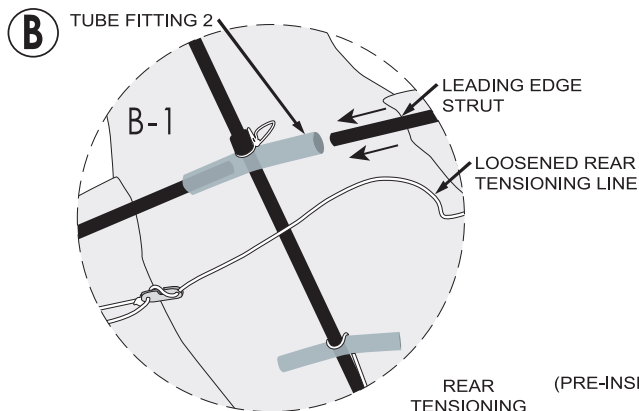
head and body assembly:

2. Insert Leading Edge Strut into Leading Edge Opening located near the Monarch's head. Join Leading Edge Strut with fitting of the Internal Leading Edge Strut (pre-inserted by factory). Repeat on other side. (Dia. B)

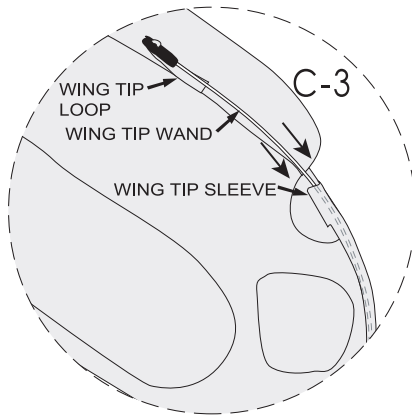
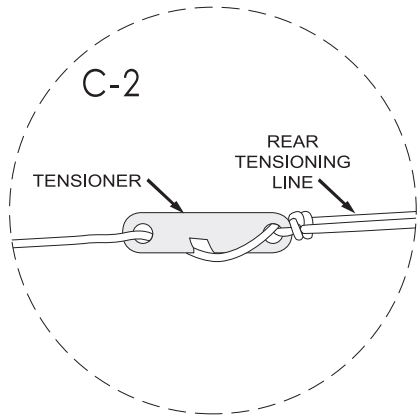
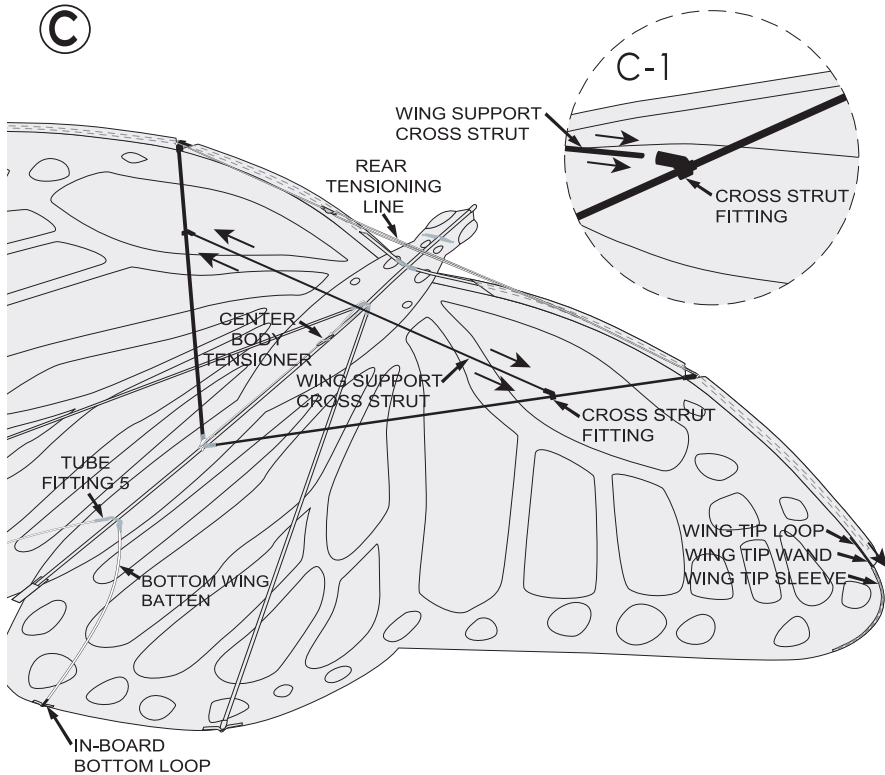
3. Insert the Leading Edge Strut into the Tube Fitting 2. (Please note the Rear Tensioning Line must be loose to accomplish this). Repeat on other side. (Dia. B-1)

4. Connect Main Body Wand Section A and B (the end opposite the notched end of Section A fits into Section B) and Insert Main Body Wand into Tube Fitting 3. Insert notched end of Main Body Wand into Outboard Webbing Loop (Dia. B-2).

5. Insert Wing Support into Tube Fitting 4 (make sure the Cross Strut Fitting is closest to the Leading Edge) and other end into the Leading Edge Fitting. Wing Support should be above the Main Body Wand (closest to viewer) and not below it (Dia. B).



**C**



6. Insert Wing Support Cross Strut into the Cross Strut Fittings (Dia C and C-1).

7. After Cross Strut is seated into the Cross Strut Fittings, tension the Rear Tensioning Line by moving the Tensioner to one end of the Kite (Dia C and C-2). **Please note: The Tensioner does not have to be under a lot of tension, but just enough to keep the Cross Strut from popping out.**

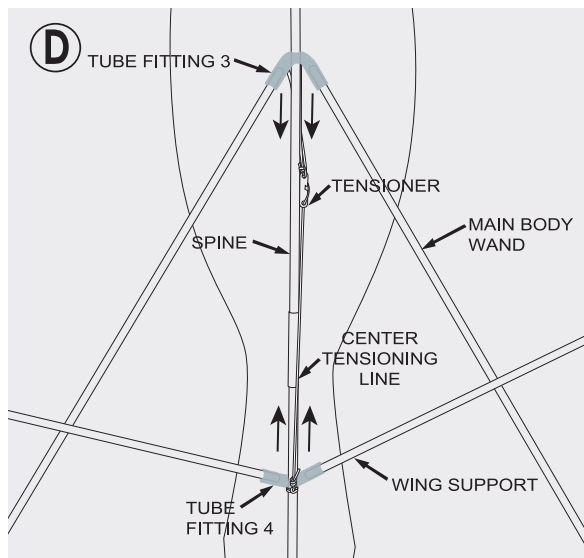
8. Tension Center Body Tensioner (the line/tensioner going vertically along the spine) so that the Leading Edge assumes a nice curve (Dia. D). **Please note: It is possible to set body tensioner once so you do not have to tension it on for future assembly.**

9. Insert Wing Tip Wand into Wing Tip Sleeve. Carefully bend and work the Wing Tip Wand through the whole Wing Tip Sleeve. Finally insert notched-end of the Wing Tip Wand into the Wing Tip Loop (Dia. C and C-3).

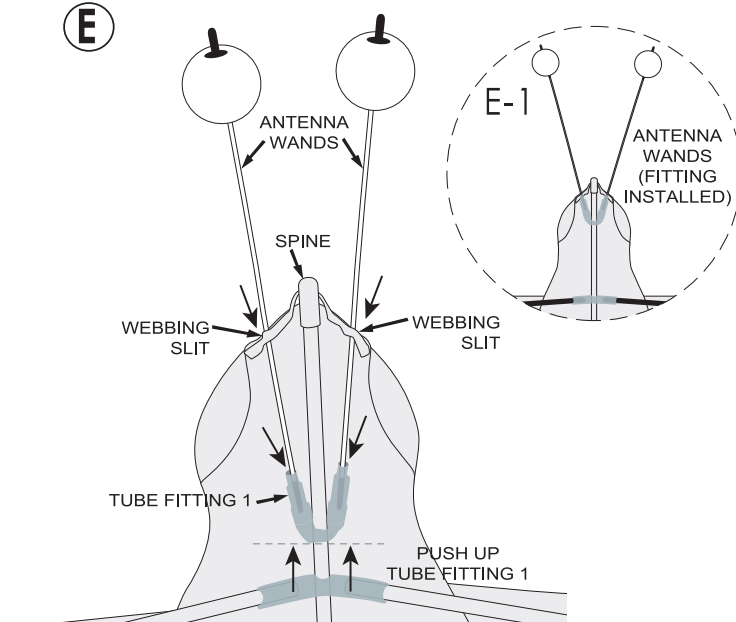
10. Insert Bottom Wing Battens into Tube Fitting 5. Secure notched end of the Bottom Wing Battens into the In-board Bottom Loop (Dia. C).

11. Insert Antenna Wands through Small Webbing Slits at the head of the Monarch. Bend the Tube Fitting 1 to accept the left and right Antenna Wands. Finally slide Tube Fitting 1 up the Spine and to the top of the head. This will spread out the Antennas (Dia. E and E-1).

12. Undo bridle daisy chain on front of kite and attach line to tow loop. You are now ready to fly.



**E**



**Wind Range: 5 mph to 14 mph (Beaufort scale 2 to 3.5)**  
**Recommended Line: 150 lb. to 250 lb. Test**